



STLD46

46" STUDIO DESK



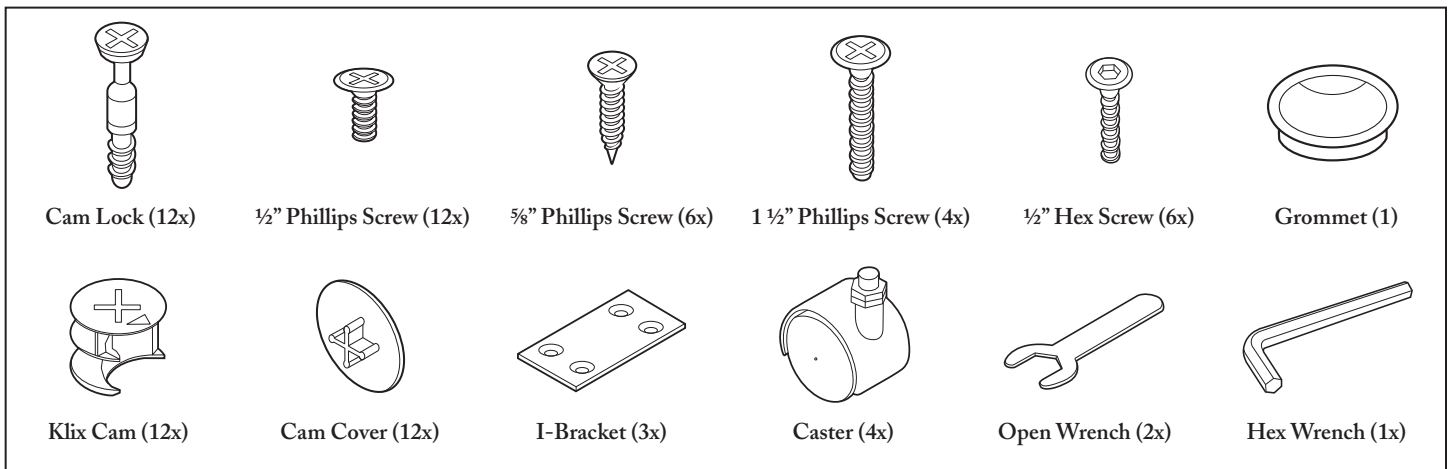
ASSEMBLY
INSTRUCTIONS

Congratulations on your purchase of this quality Studio Trends™ product. By following the easy assembly instructions found in this manual, you'll have your new desk built and ready for use in very little time.

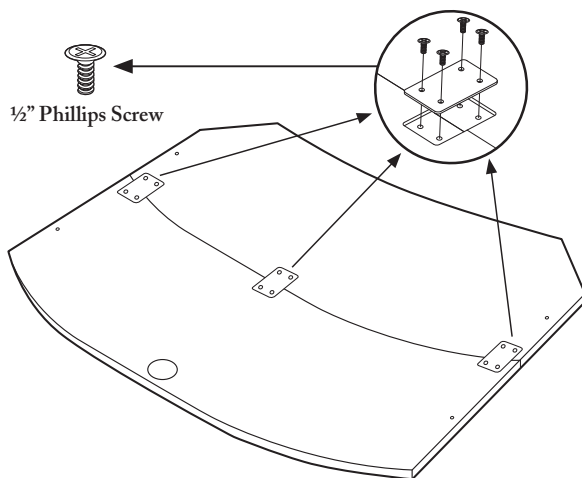
IMPORTANT ASSEMBLY TIPS

- Tip 1: Having a second person or "helper" makes assembling the desk much easier.
- Tip 2: Be sure to assemble your desk on a soft, flat surface. If you have hardwood floors, use a blanket or the packing materials as a working surface to protect the desk and floor.
- Tip 3: We include two wrenches, however you'll also need a Phillips-head screw driver.

NOTE: The included hardware parts are illustrated below.

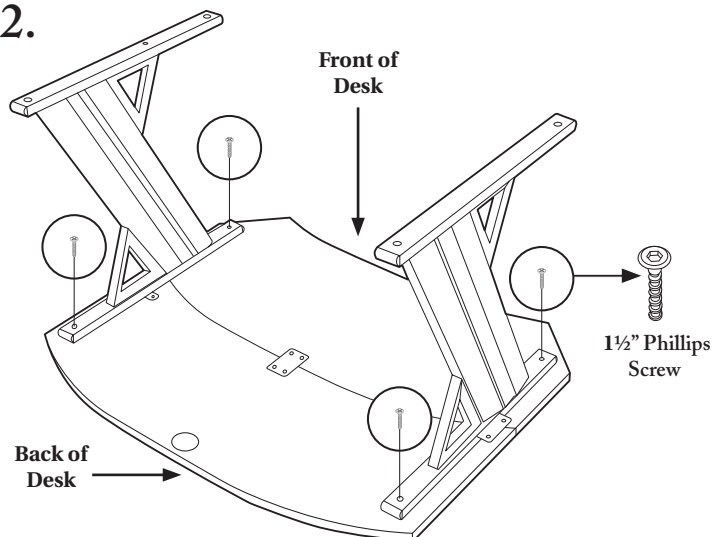


1.

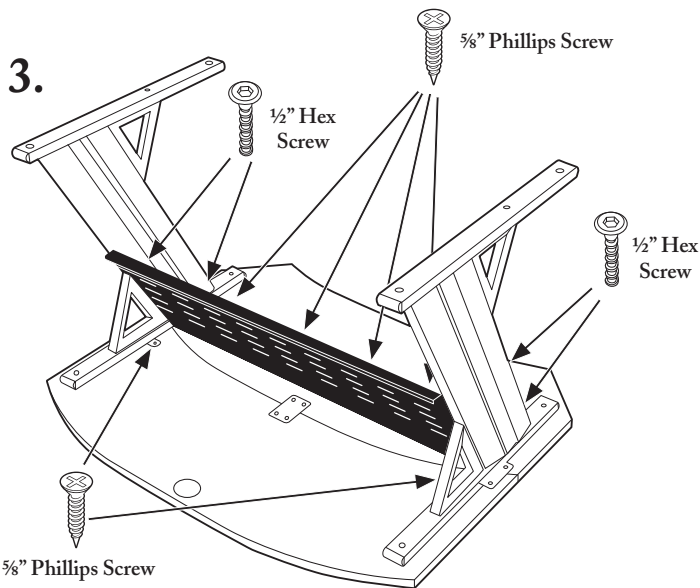


Place the two sections of the tabletop face down. Be sure to align the edge and seam so they are flush. Attach the three I-brackets using the 1/2" Phillips screws (12x). Tighten all the screws finger tight. Check the alignment, then tighten screws fully using a Phillips-head screwdriver.

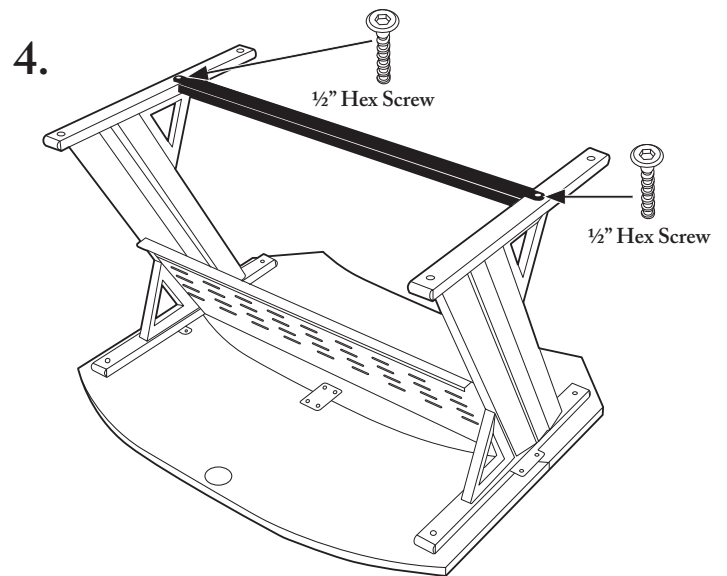
2.



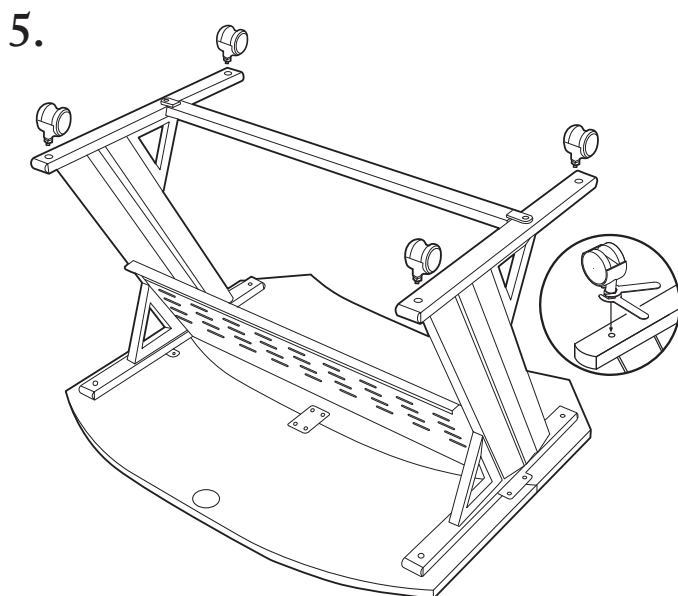
Attach the two legs to the bottom of the desk with the 1 1/2" Phillips-head screws (4x). **Tighten screws only finger tight for now.**



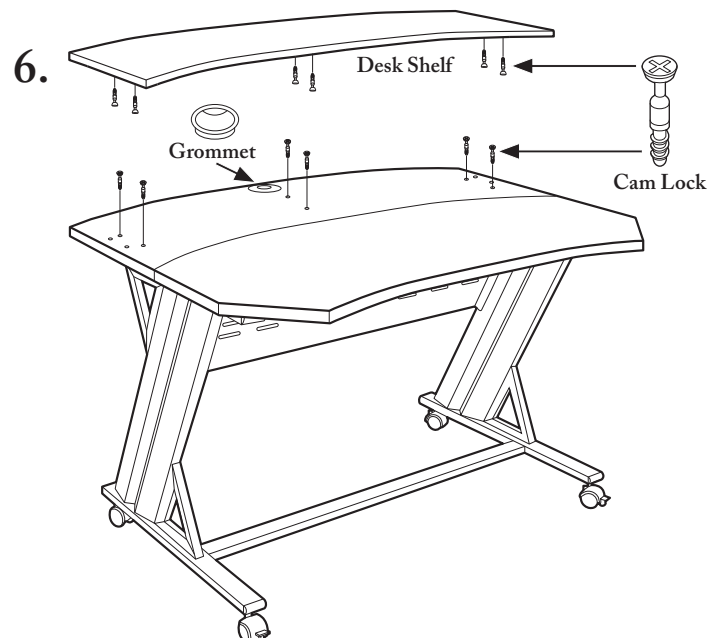
Attach the modesty panel to both legs using the 1/2" hex screws (4x). Tighten fully. Then install the 5/8" Phillips screws (2x), attaching the modesty panel to the desktop. Then, using the remaining 5/8" Phillips screws (4x), attach the legs to the desktop.



Attach the crossmember bracket to both legs using the 1/2" hex screws (2x). Check the alignment of the assembly, adjust if necessary, **then tighten screws fully.**

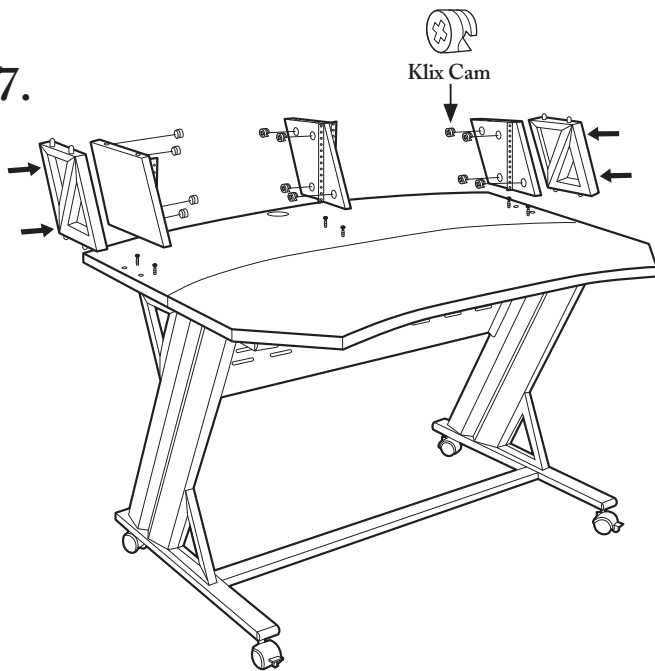


With the included Open wrenches, install the casters (4x). Position the brake-equipped casters on the "front" of the desk. Please note that these wheels are height adjustable, enabling you to match the height of the desk with other furniture.



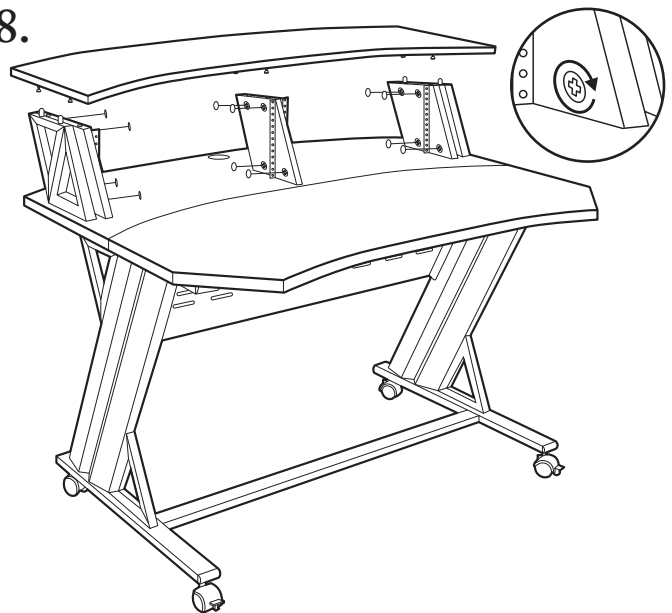
With the help of a friend, turn the desk up on its wheels. Install the cable management port grommet. Then install the cam locks (6x) into the desktop. Install the rest of the cam lock screws (6x) into the bottom of the desk shelf.

7.



Insert Klix cams (4x) into each of the rack mount walls by doing the following: Point arrows toward the pre-drilled cam holes. Push cams into holes. Then place the decorative triangular pieces into place next to the side walls.

8.



Place the desk shelf on top of the rack mount walls and tighten the Klix cams clockwise using a Phillips-head screwdriver. Use caution not to over-tighten Klix cams. To complete the assembly, place the cam covers (12x) into place.

For customer service and replacement parts:
www.studiotrendsdesigns.com

One (1) Year Limited Warranty

Subject to the limitations set forth below, Studio Trends(TM) hereby represents and warrants that the components of this product shall be free from defects in workmanship and materials, including implied warranties of merchantability or fitness for a particular purpose, subject to normal use and service, for one (1) year to the original owner from the date of purchase.

Retailer and manufacturer shall not be liable for damages based upon inconvenience, loss of use of product, loss of time, interrupted operation or commercial loss or any other incidental or consequential damages including but not limited to lost profits, downtime, goodwill, damage to or replacement of equipment and property, and any costs of recovering, reprogramming, or reproducing any program or data stored in equipment that is used with Studio Trends(TM) products. This guarantee gives you specific legal rights. You may have other legal rights which vary from state to state. Some states do not allow limitations on how long an implied warranty lasts, so the above limitation may not apply to you.

California Prop 65 Warning: This product may contain a chemical[s] known to the state of California to cause cancer, birth defects, or other reproductive harm.

Studio Trends
P.O. Box 5111
Thousand Oaks, CA 91359-5111

All trademarks and registered trademarks mentioned herein are recognized as the property of their respective holders.

Made in China



Your new Studio Trends 46" desk is now ready to use for years of reliable service.