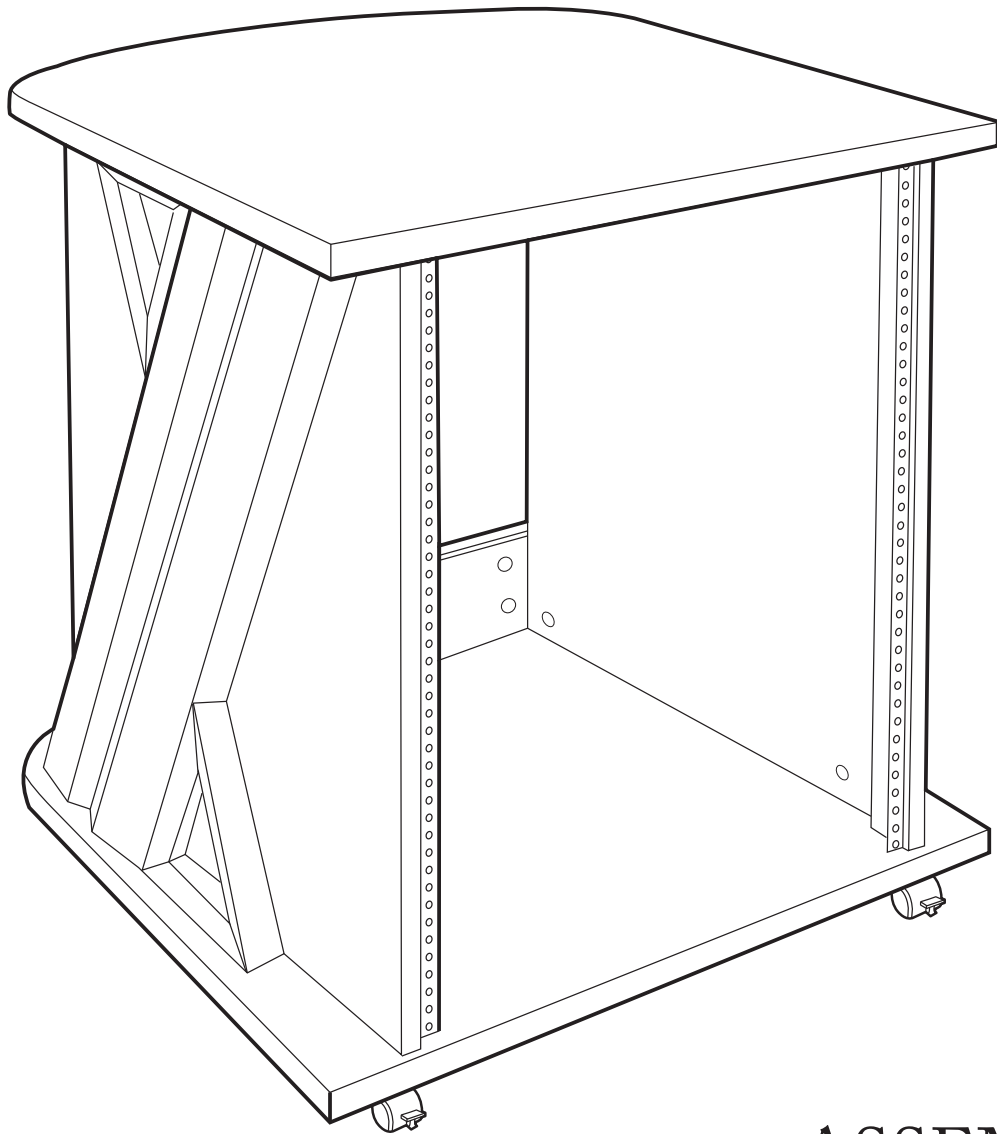




STSC24

24" SIDECAR



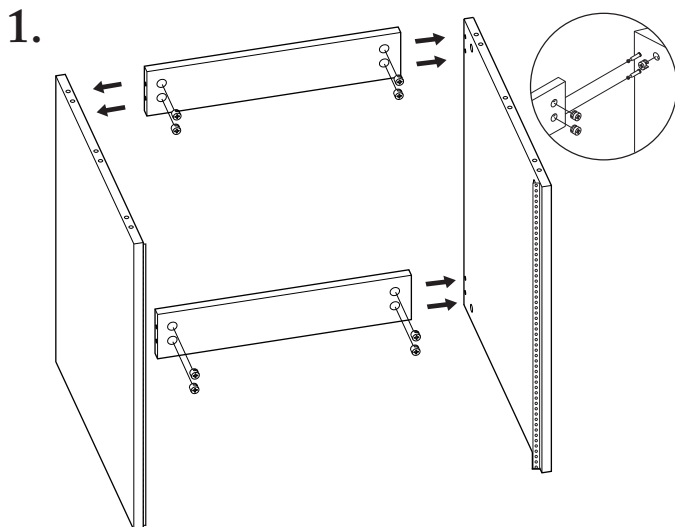
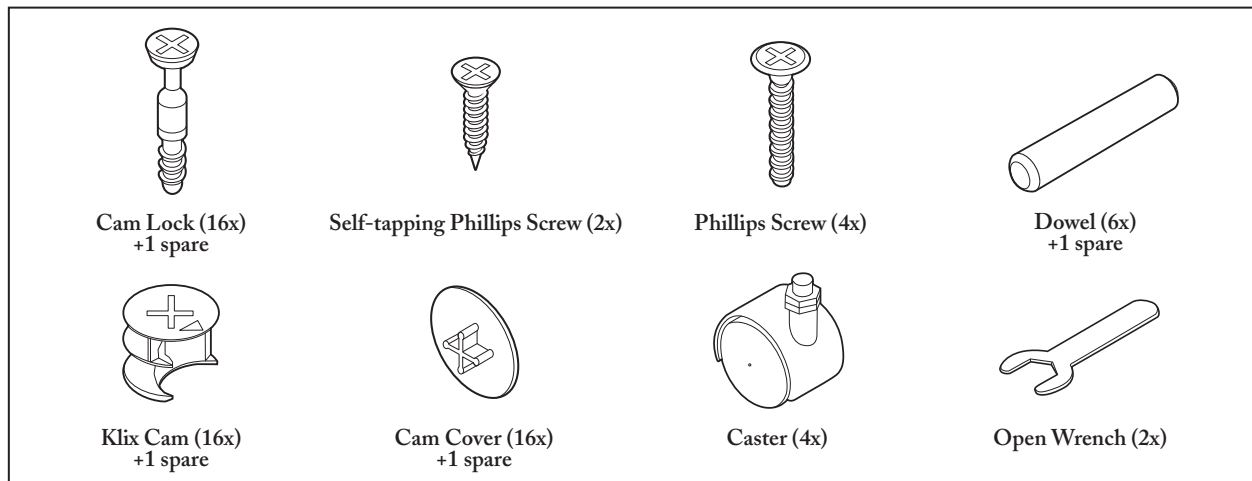
ASSEMBLY
INSTRUCTIONS

Congratulations on your purchase of this quality Studio Trends™ product. By following the easy assembly instructions found in this manual, you'll have your new desk built and ready for use in very little time.

IMPORTANT ASSEMBLY TIPS

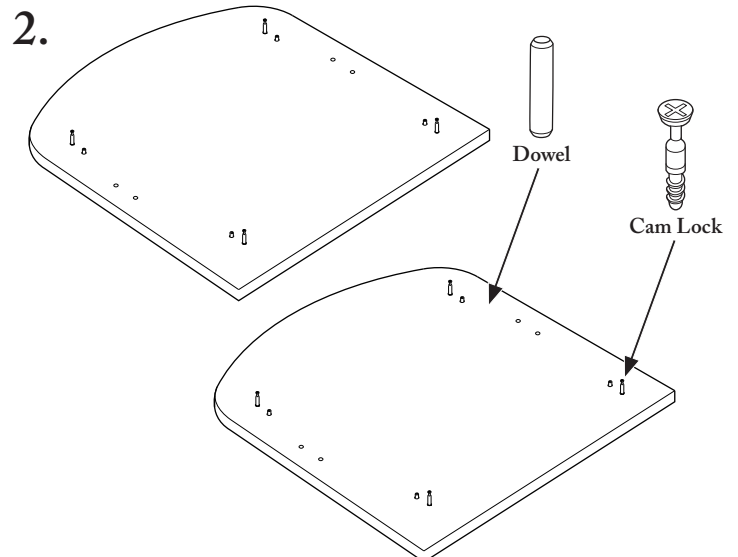
- Tip 1: Having a second person or “helper” makes assembling the sidecar much easier.
- Tip 2: Be sure to assemble your sidecar on a soft, flat surface. If you have hardwood floors, use a blanket or the packing materials as a working surface to protect the desk and floor.
- Tip 3: We include two wrenches, however you'll also need a Phillips-head screw driver and a standard flathead screw driver.

NOTE: The included hardware parts are illustrated below.



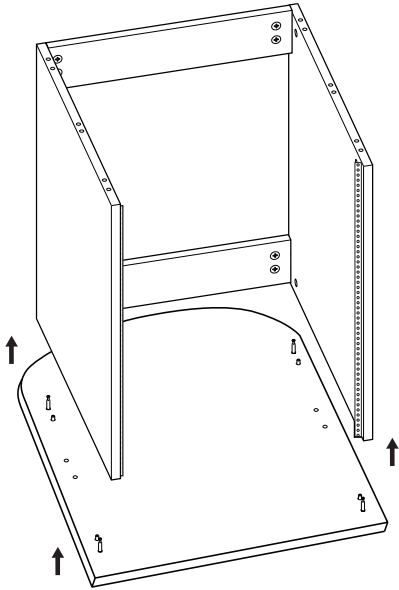
Install Klix cams (4x) to each of the rear support panels. Then, install cam locks (4x) into each side panel. Attach side panels to rear supports and tighten cam locks with a Phillips-head screw driver.

Note: To install Klix cams, point arrows found on the cams toward the pre-drilled cam holes. Then, push cams into place.



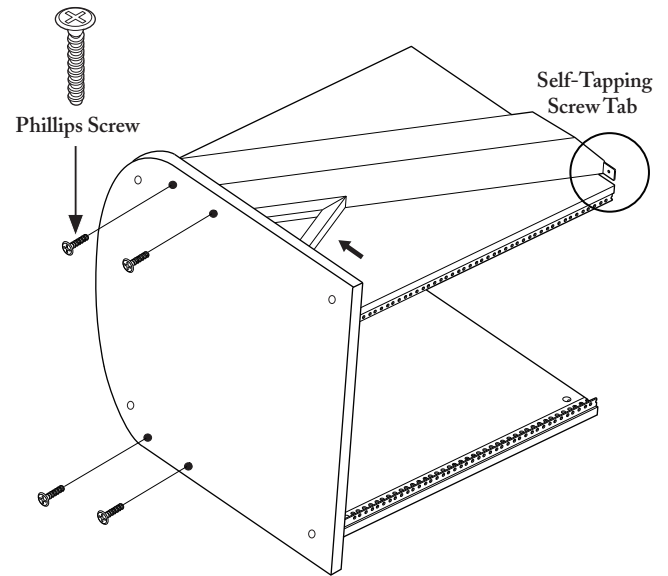
Install cam locks (4x) and dowels (4x) on the underside of the top panel. Then, install cam locks (4x) and dowels (4x) on the topside of the bottom panel.

3.



To attach the bottom panel to the side panels, install the Klix cams (4x) to the bottom holes of the side panels. When all the connecting hardware are in the right position and aligned correctly, attach the bottom panel. Then, install tighten the Klix cams with a Phillips-head screwdriver.

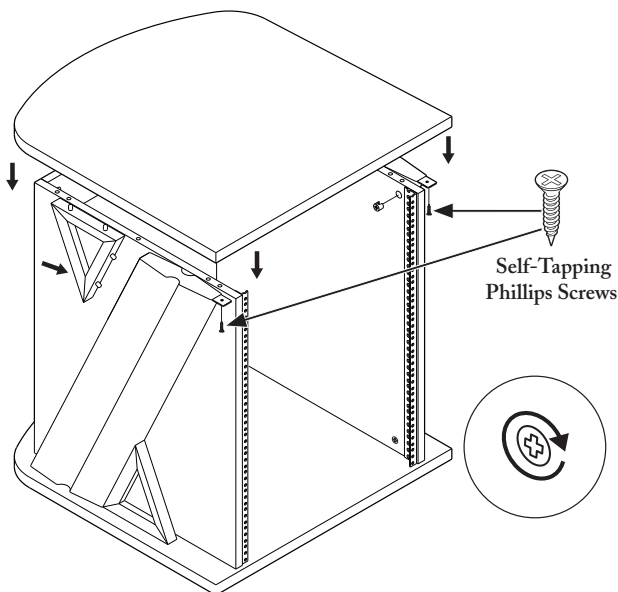
4.



Turn the unit sideways with the bottom panel facing toward you and attach the metal posts (2x) by inserting Phillips-head screws (4x) through the underside of the bottom panel. Make sure the self-tapping screw tap is positioned as shown in illustration. Repeat for the other side. Attach the bottom decorative triangles by sliding into position, nub to hole.

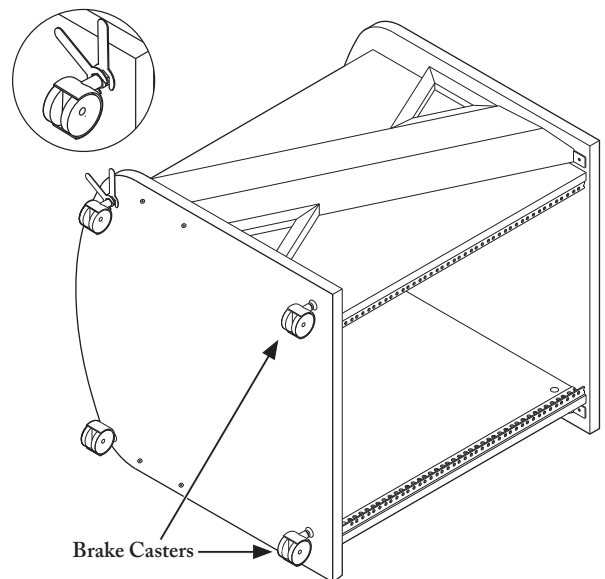
Note: At this step, the posts are not yet securely mounted to the unit, so hold both posts while moving the unit to the upright position.

5.



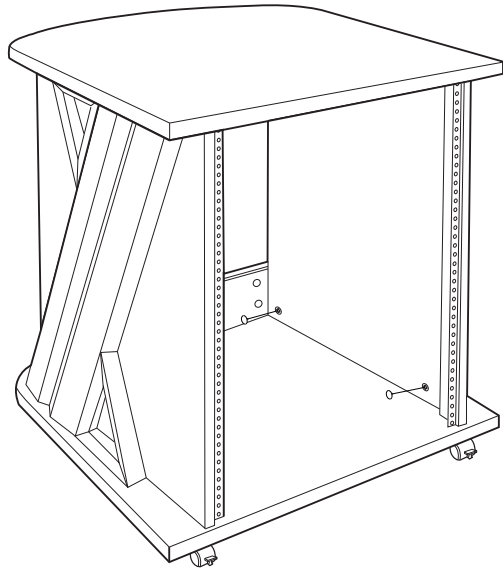
To attach the top panel, first attach the top decorative triangles to the metal posts by sliding them into position, nub to hole. Then place the remaining Klix cams (4x) in the appropriate holes. Make sure all connecting hardware are in the right position and aligned correctly. Tighten cam locks fully. Then install self-tapping Phillips screws (2x).

6.

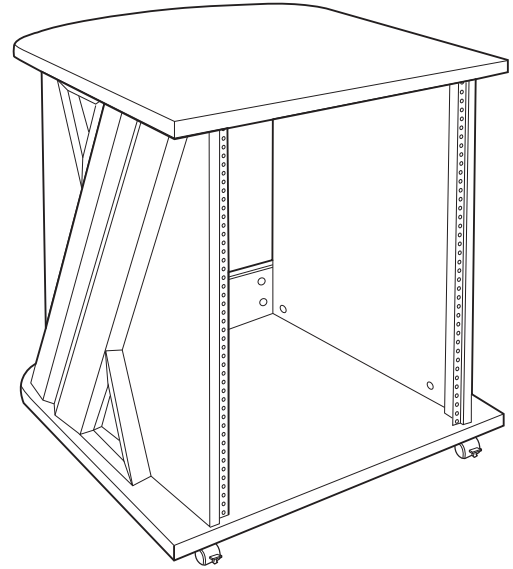


Turn the unit sideways again. With the included open wrenches, install the casters (4x). Make sure the “brake” casters are placed at the front of the unit. Also, please note that these wheels are height adjustable, enabling you to match the height of the sidecar with other furniture.

7.



To complete the assembly, place the cam covers over every Klix cam for a cleaner look.



Your new Studio Trends 24" Sidecar is now ready to use for years of reliable service.

For customer service and replacement parts: www.studiotrendsdesign.com

One (1) Year Limited Warranty

Subject to the limitations set forth below, Studio Trends(TM) hereby represents and warrants that the components of this product shall be free from defects in workmanship and materials, including implied warranties of merchantability or fitness for a particular purpose, subject to normal use and service, for one (1) year to the original owner from the date of purchase.

Retailer and manufacturer shall not be liable for damages based upon inconvenience, loss of use of product, loss of time, interrupted operation or commercial loss or any other incidental or consequential damages including but not limited to lost profits, downtime, goodwill, damage to or replacement of equipment and property, and any costs of recovering, reprogramming, or reproducing any program or data stored in equipment that is used with Studio Trends(TM) products. This guarantee gives you specific legal rights. You may have other legal rights which vary from state to state. Some states do not allow limitations on how long an implied warranty lasts, so the above limitation may not apply to you.

California Prop 65 Warning: This product may contain a chemical[s] known to the state of California to cause cancer, birth defects, or other reproductive harm.

Studio Trends
P.O. Box 5111
Thousand Oaks, CA 91359-5111

All trademarks and registered trademarks mentioned herein are recognized as the property of their respective holders.

Made in China